

## STRONG SL

Non-woven material based on synthetic fibres with polypropylene reinforcement, impregnated with synthetic resins in watery dispersion. It has a very excellent tensile behaviours and stability. It meets the European Standards concerning the dangerous substances requirements.

## STRONG SL - STRONG ESL

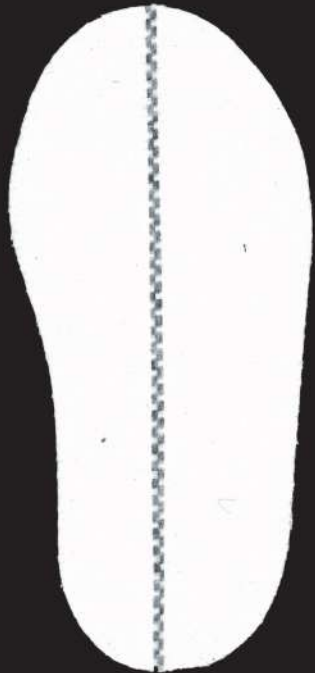
The lighter the more performing



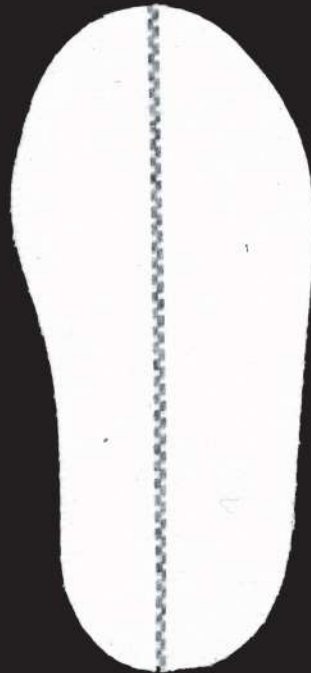
- Incredibly light
- Minimal tickness and space reduction
- Excellent tensile and stability

Ask for GRS certified materials

STRONG SL



STRONG ESL



Composition: 43% Synthetic Fibres

34% Polypropylene reinforcement 23% Synthetic Resins

Test	Standard	Units	Typical values
Weight	UNI EN ISO 2286-2	gr/m <sup>2</sup>	350
Thickness	UNI ISO 2589	mm	0.9
Density	/	gr/dm <sup>3</sup>	389
Breaking load resistance	MD CD UNI EN 29073-3	N/5cm	1570 1350
Modul at 5% elongation	MD CD SATRA TM2-2	N/cm	115 75
Tearing strenght resistance	MD CD ASTM D4704	N	165 200

Tolerance +/-10%, except for cases of specific requests

## STRONG ESL

Non-woven material based on synthetic fibres with polypropylene reinforcement, coated with synthetic resins in watery dispersion. It has a very excellent tensile behaviours and stability. It is particularly suitable for PU injected shoes. It meets the European Standards concerning the dangerous substances requirements.

Composition: 37% Synthetic Fibres

32% Polypropylene reinforcement 31% Synthetic Resins

Test	Standard	Units	Typical values
Weight	UNI EN ISO 2286-2	gr/m <sup>2</sup>	410
Thickness	UNI ISO 2589	mm	0.9
Density	/	gr/dm <sup>3</sup>	455
Breaking load resistance	MD CD UNI EN 29073-3	N/5cm	1650 1400
Modul at 5% elongation	MD CD SATRA TM2-2	N/cm	110 120
Tearing strenght resistance	MD CD ASTM D4704	N	110 160

Tolerance +/-10%, except for cases of specific requests